

# Exten Solar Co., LTD

dedicate to offer Solar Mounting System featured  
with safety, economic & ensuring steady generation



## Content

1. Company Introduction
2. Product Presentation
3. Value-added Services
4. Manufacturing Base
5. Job Reference

## 1. Company Introduction

Exten solar is a company delicates to provide Mounting System solution for global solar farm with one-stop services covering design for fix mounting structure & tracking system, project site investigation, product testing, mechanical verification, product supply, installation guide, etc.

**Product** includes **Fix Mounting Structure, Adjustable Mounting Structure, Tracking System** (mounting structure + electronic control + transmission part). **Carport & Agriculture Greenhouse** and so on.

### Our Mission :



## Core Strengths

1. Professional design team with rich experience.



Exten's designers have provided professional proposals of solar mounting structure meeting international standard for variety kinds of solar system worldwide with accumulative project capacities reach up to 1.5GW!

2. Thoughtful sales team with state-of-the-art knowledge



Exten's sales team is keeping equipped itself by knowledge acquisition over various development procedures & policy of solar system in different countries. So that it can better understand what the customers need for pushing the project successfully and offer best assistance on it.

3. More than a mounting system supplier



Exten stems from good product quality and aims at costs saving for the customers by looking at the whole process of solar system building. Innovation is its main tool to fulfill the goal and make customized and optimized mounting system proposals available to the customers.

## 2.Product Presentation

2.1 Ground Mounting System

2.2 Roof Mounting System

2.3 Tracking System

2.4 Carport System

2.5 Manual Adjustable Mounting System

2.6 Agriculture Greenhouse

## 2.1 Ground Mounting System

**Ground Screw Foundation**



**RAMPOST Foundation**



**Concrete Foundation**





## 2.2 Roof Mounting System

Color Metal Sheet Roof System



Concrete Roof System



Tilt Roof System



## 2.3 Tracking System

Water Weight Tracker System



Single Axis Tracking System





## 2.4 Carport System

Single Post Carport System



Double-Post Carport System



## 2.5 Manual Adjustable Mounting System



## 2.6 Agriculture Greenhouse





# Value-added Services—The reason why you can trust Exten.

✓ Foundation Type Selection  
(Incl. investigation on site and pull-out test.)

To pre-estimate the suitable foundation type via geotechnical report and site investigation or photos of project site and confirm the optimized foundation system verified by pull-out test on site.



soilphilippines		SOIL PHILIPPINES INDEX TESTING, INC.													
FINAL BOREHOLE LOG AND SUMMARY OF TEST RESULTS															
PROJECT : <b>PROPOSED SOLAR PLANT PROJECT</b>						Final Depth : 11.77m		Prepared By : AGC							
LOCATION : <b>BRGY, PAGULUDAN, CURRIMAO, ILOCOS NORTE</b>						Elevation (m) : 16m		Checked By : LMT							
CLIENT : <b>MIRAE ASIA ENERGY CORPORATION</b>						Date Drilled : 03/13/12		Northing : 180246		Sheet No : 1 OF 1					
Borehole No : 04		H2O Level bet G.S. (m) : 3.50m w/ Casings				Date Gauged : 03/14/12		Easting : 12028715							
DEPTH, m.	Sample No.	Recovery Sample %	R.O.D. %	Log Symbol	Soil Classification	DESCRIPTION	N - BLOWS	Natural Moisture Content	Atterberg Limits				UCT		
									Liquid Limit	Plasticity Index	Shrinkage Limit	Moisture Ratio	4	10	40
1.00	1	29			SP	Gray to Brown Poorly Graded SANDS w/ Little Fines (Medium Dense)	12	02	NP	NP	100	93	07		
2.00	2	87			SP	Light Gray Poorly Graded SANDS w/ Little Fines (Medium Dense)	18	18	NP	NP	100	59	05		
3.00	3	82			SP	Light Gray Poorly Graded SANDS (Medium Dense - Dense)	26	19	NP	NP	100	62	04		
4.00	4	78			SP		42	20	NP	NP	100	48	01		
4.76	5	90			SP	Light Gray Poorly Graded SANDS (Very Dense - Medium Dense)	46	18	NP	NP	100	91	46	03	
6.00	6	76			SP		28	20	NP	NP	100	97	55	02	
7.50	7	69			SM	Light Gray Silty SANDS w/ Traces of Gravel (Dense - Very Dense)	50	16	NP	NP	97	89	70	13	
8.96	8	44			SP		38	18	NP	NP	98	92	80	22	
10.43	9	68			SP	Light Gray Poorly Graded SANDS w/ Little Fines (Very Dense)	33	23	NP	NP	100	99	87	06	
11.77	10	95			SM	Light Gray Silty SANDS w/ Traces of Gravel (Very Dense)	40	14	NP	NP	93	77	59	17	
*** END OF BOREHOLE @ 11.77m ***															

## Value-added Services——The reason why you can trust Exten.

✓Optimized Mounting System Proposal

•Design tool and standards meeting international standard

结构设计软件: SAP2000 ;

Midas Civil ; 3D3S ;

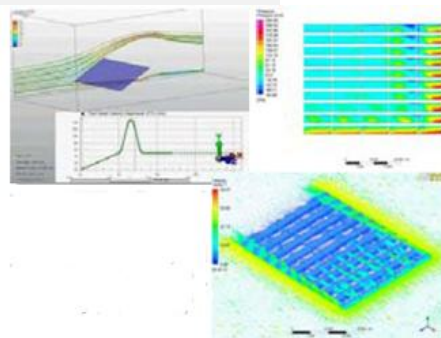
Mathcad ;

绘图软件:

Solid works;

AUTO CAD; Pro-E

风压模拟软件: FLUENT



Design software

Australia	AS/NZS 1170:Structural design actions-part 2:Wind actions	AS 4100-1998
British	BS6399	BS 5950-1-2001 BS 8118
Canada	NBC 1990	CAN/CSA-S16-2001
China	GB 50009-2001	GB 50017-2003
	GB 50797-2012	Code for design of photovoltaic power station
Europe	EUROCODE 1 PART 1	EUROCODE 3/ EUROCODE 8
India	IS 875	IS 800-2007
Japan	JIS C 8955:2004	AIJ-2002
Malaysia	MS1553-2002	
South Africa	SANS10160 1-7	SANS 1431
USA	AWS, ASCE	ANSI/AISC 360-2005
Pakistan	BCP SP-2007	BCP SP-2007

International standards for structure design

[Website: www.extensolar.com](http://www.extensolar.com)

[E-mail:jerry.zhang@extensolar.com](mailto:jerry.zhang@extensolar.com)



## Value-added Services——The reason why you can trust Exten.

- Available Test and Verification



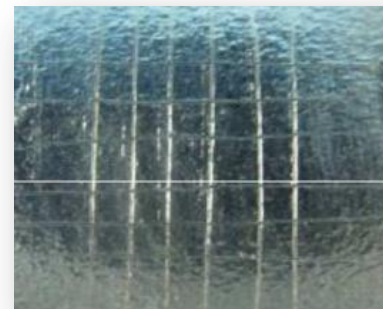
Pull-out  
test

mechanical  
property  
test

Clamp pulling  
test for metal  
sheet system

galvanizing  
adhesion  
test

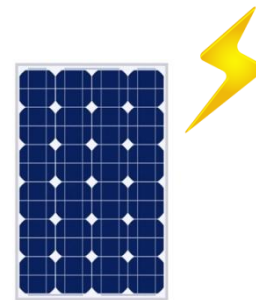
Salt spray  
test



## Value-added Services——The reason why you can trust Exten.

✓Other Design features:

- Offer optimized proposal so as to reduce mounting structure cost, transportation cost, installation cost and maintenance cost, etc.
- Manage to design adaptable mounting system to facilitate installation.
- Take grounding design into full consideration.
- Improve ventilation for module cooling.
- Special design for Inverter & combiner box mounting structure with characters of installation friendly and cost saving.



high generation efficiency

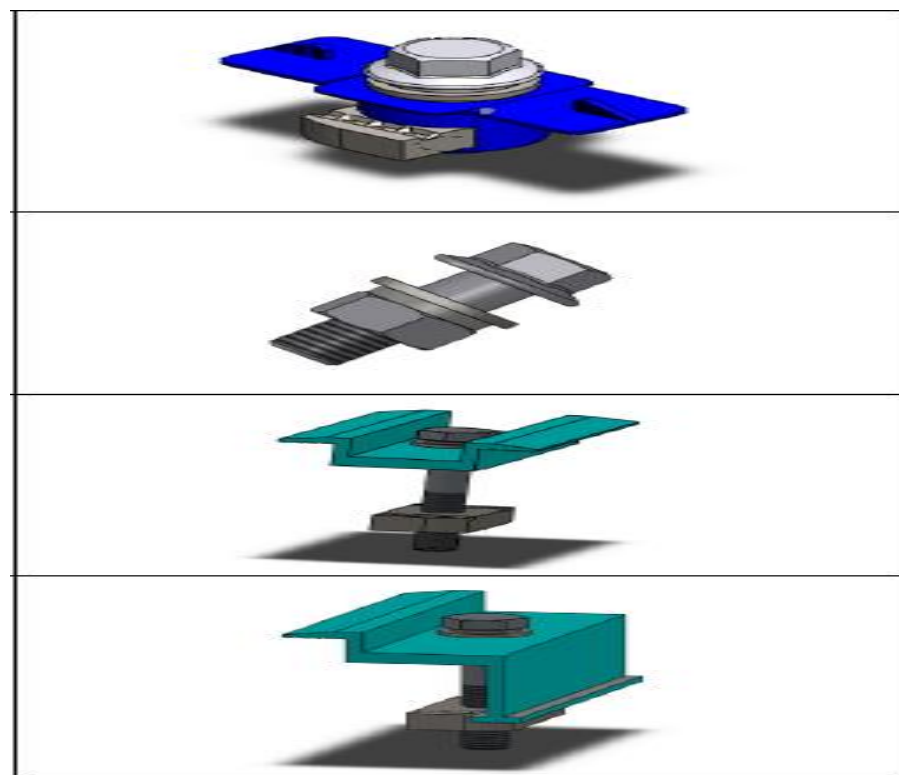
## Value-added Services——The reason why you can trust Exten.

### ✓Component pre-assemble service

Benefit from pre-assembled mounting structure, there will be less time and labor investment into construction. What's more it also make it possible to avoid components loss especially hardware.



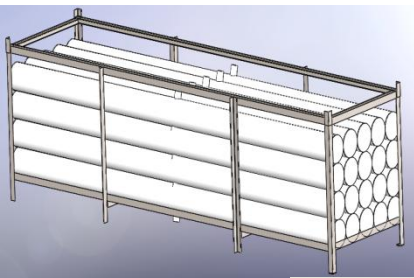
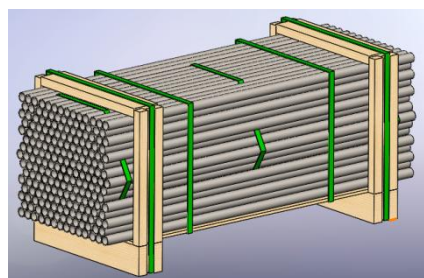
Pre-assembled rail, strut, column



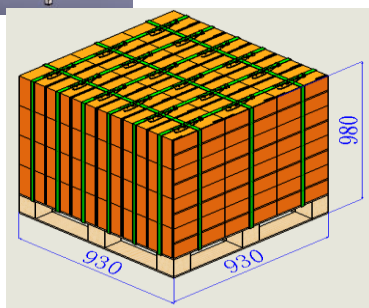
Pre-assembled hardware

## Value-added Services——The reason why you can trust Exten.

- ✓ Packing design
- Enable to avoid the usage of special container in order to lower transportation fee.
- Facilitate for transshipment and unloading on project site.
- Suitable for long-distance land and ship carriage ensuring product integrity.



Facilitate for transportation



ok

ok

ok





## Packing & Container loading





## Value-added Services——The reason why you can trust Exten.

### ✓ On-site Technical guidance

Offer on-site technical guidance throughout the whole project process so as to ensure proper installation. Professional engineers are available to visit project site and provide installation guidance to construction team. In this way, it can accelerate learning process and improve proficiency of the installation team in order to reduce installation cost and maintenance cost caused by improper installation.



## 4. Manufacturing Base



**Production Capacity : 800MW+**

- ✓ **Auto-welding production lines**
- ✓ **Self-own galvanization lines**
- ✓ **Well-established quality management system**



## 5. Job Reference



Project Site	Gaocheng Hebei Province, China
System Type	Ground mounting system
Installation Capacity	6.6MW
Solution	Agriculture Greenhouse
Installation Time	2015



Project Site	Baigou Hebei Province, China
System Type	Roof Mounting System
Installation Capacity	10.2MW
Solution	Concrete foundation System
Installation Time	2014

## 5. Job Reference



Project Site	Quyung Hebei Province, China
System Type	Ground mounting system
Installation Capacity	500KW
Solution	Tracking system
Installation Time	2015



## 5. Job Reference



Project Site	Malaysia
System Type	Roof Mounting System
Installation Capacity	1.2MW
Solution	Metal sheet mounting system
Installation Time	2014

Project Site	Singapore
System Type	Roof Mounting System
Installation Capacity	500KW
Solution	Metal sheet mounting system
Installation Time	2015



## 5. Job Reference



Project Site	Greece
System Type	Ground mounting system
Installation Capacity	2MW
Solution	Ground Screw Mounting System
Installation Time	2014

Project Site	Greece
System Type	Ground mounting system
Installation Capacity	5MW
Solution	Ground Screw Mounting System
Installation Time	2015

## 5. Job Reference



Project Site	Thailand
System Type	Ground mounting system
Installation Capacity	1.25MW
Solution	Water Gravity Tracking System
Installation Time	2015

Thank You !